

getting Noticed

Tell better stories and get more page views!

Bill Davenhall
Senior Health Advisor, Esri

What if...

Market your results to

health seeking consumers?

Got paid by the

page view?

Recommend placement of

your results on billboards?



What do you
want your
research to
actually do?

Inform Policy - Change Medical Practice - Advocate for Change - Mobilize the Consumer...

A close-up photograph of an elderly person's hands interacting with a tablet computer. The person is wearing a blue patterned shirt and a grey jacket. The tablet screen displays a grid of blue icons, likely a calendar or a list of tasks. The background is slightly blurred, showing a desk with some papers and a pen.

Citizen Epi



PARENTS that suspect their newborn might have a hearing loss are frantic to get a diagnoses and start treatment.

Any delay would be unacceptable - but depending on where you live, it could take anywhere between 10 to 60 days. Delayed care is not a pretty sight!

Helping parents, help their children - why we count the days.

Check it out today!

RightCare.gov

NHS Atlas



NHS Atlas of Variation in Healthcare Series

The NHS Atlas of Variation series is intended to support local decision making to increase the value which a population receives from the resources spent on their healthcare. It supports the search for unexplained variations, the identification and attention to unwarranted variation, helping clinicians to understand what is going on in their area and where to focus attention to improve the care they provide. The first NHS Atlas of Variation was published in November 2010 and was welcomed by the NHS and other stakeholders, with topics selected by clinicians as being important to their speciality. In December 2011 a second and expanded version of the Atlas, consisting of 71 maps, was published.

- [Atlas of Variation 2010](#)
- [Atlas of Variation 2011](#)

Themed Atlases..

Following the success of the publication of the first two NHS Atlases of Variation, work is underway to develop a series of themed atlases focusing on specific

The Right Care Atlas Series

- [Atlas of Variation 2010](#)
- [Atlas of Variation 2011](#)

Themed Atlases

- [Children and Young People](#)
- [Diabetes](#)
- [Kidney Disease](#)
- [Respiratory Disease](#)
- [Liver Disease](#)
- [Diagnostic Services](#)

Atlas Case Studies

Download some case studies of the Atlas in action in local commissioning

Online..

All Atlases are also available as fully interactive online maps using InstantAtlas© GIS software

NHS Atlas of Variation in Healthcare 2011

Rate of urgent GP referrals for suspected cancer per 100,000 population by PCT,

RightCare  SPH
Solutions for Public Health

Change indicator geography

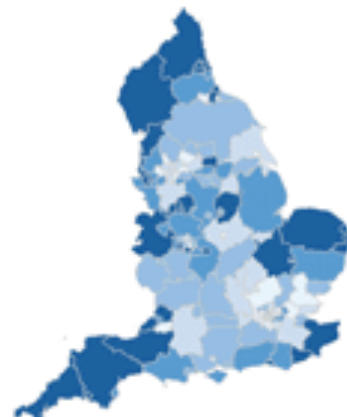
- ▼ Cancer and tumours
 - Urgent GP referrals for suspected cancer
 - Emergency cancer bed-days
 - Length of stay for elective breast surgery
- ▼ Endocrine, nutritional and metabolic problems
 - People in the NDA with Type 1 diabetes receiving all nine key care processes
 - People in the NDA with Type 2 diabetes receiving all nine key care processes
 - People in the NDA having major lower limb amputations
 - Excess length of stay among people with diabetes
 - Insulin total net ingredient cost
 - Non-insulin anti-diabetic drugs total net ingredient cost
- ▼ Mental disorders
 - Anti-dementia drug items prescribed
 - Admissions for child mental health disorders
- ▼ Neurological problems

+

0

1000

2000



© Crown copyright and database rights 2011 Ordnance Survey 100030290



Metadata

Help

Lowest value

Area name	Value
Ashton, Leigh ...	1,531.0
Barking and D...	1,641.1
Barnet	1,776.5
Barnsley	2,186.0
Bassetlaw	1,587.8
Bath and Nort...	1,527.9
Bedfordshire	1,724.2
Berkshire East	1,567.7
Berkshire West	1,839.4
Bexley	2,277.2
Birmingham E...	1,776.0
Blackburn wit...	1,554.5
Blackpool	2,199.3
Bolton	1,678.3
Bournemouth ...	1,861.6
Bradford and ...	1,946.7

Your Infant Can't Hear?

Maybe You Should Move!

Find Out Where

Get the **RightCare** app today!





HAVING A SUDDEN CARDIAC ARREST is something we would like to avoid. Implanted defibrillators really save lives - millions everyday.

But what if you really needed one but your doctor never recommended one?

Depending on where you live you might be lucky and get one before you actually need it!

Maybe it's time to start looking for a different region to live?

Check it out today!

Factcheck.de

<https://faktencheck-gesundheit.de/english-summary/>



Fakten zum
Gesundheitswesen

Tipps und Hilfen für
Patienten

Unsere Themenportale

Über das Projekt

Presse

Faktencheck Gesundheit > English Summary

Initiative for High-Quality Healthcare



The Initiative for High-Quality Healthcare, set up by the Bertelsmann Foundation, seeks to map regional variations in healthcare in Germany. Inspiration and model were other international efforts in the UK, the US, the Netherlands or Spain to investigate variations in healthcare. The Initiative for High-Quality Healthcare seeks to collaborate with national and international partners and experts who are committed to the same cause.

"Faktencheck Gesundheit"

In line with its international precursors namely the Dartmouth Atlas of Health Care and the NHS Atlas of variation in Healthcare the first publication, published in September 2011, illustrates 16 different cases of regional variations in healthcare in brief. In the years to come single topic reports published regularly under the umbrella of the "Faktencheck Gesundheit" ("Healthcare Fact Check") will focus on relevant healthcare issues addressing the range of variations, underlying causes, possible solutions, and providing the public with relevant information and recommendations for action. The first examples of such single issue reports have addressed:

- > antibiotic prescriptions for children (February 2012, www.faktencheck-antibiotika.de)
- > caesarean sections (November 2012, www.faktencheck-kaiserschnitt.de)
- > tonsillectomy in children (May 2013), www.faktencheck-mandeloperation.de)
- > knee arthroplasty (October 2013), www.faktencheck-knieoperation.de)

Background

Over-, under- and misuse in healthcare have long been a subject of discussion among experts in Germany and worldwide. The Advisory Council on the Assessment of Developments in the Health Care System called attention to the problem as early as 2001, noting that valuable resources are not only used inappropriately and unnecessarily, the regional provision of healthcare services and the range of healthcare options offered also often do not reflect people's needs.

Today, the right rates of variations are still unknown mainly due to a lack of robust data. Analyzing regional variations is one approach to identifying causes of over-, under-, and misuse. With the Initiative for High-Quality Healthcare the Bertelsmann Foundation wants to contribute to establishing better healthcare in Germany.

CONTACT



Marion Grote
Westrick
Project
manager
++49-5241 81-
81271

Contact form

REGIONAL VARIATION IN GERMAN HEALTHCARE



Ranging from caesarian section to end-of-life care, this report includes 16 different topics and procedures and illuminates the bandwidth and magnitude of regional variations in the German health care system.

[Download \(PDF, 3.1 MB\)](#)

English summaries of single issue reports

[Antibiotic prescriptions for children \(PDF, 700kb\)](#)

[Caesarean sections in Germany \(PDF, 800KB\)](#)

[Tonsillectomy in children \(PDF, 1.4MB\)](#)

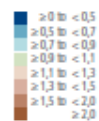
Healthcare Fact Check

Regional Variations in German Healthcare

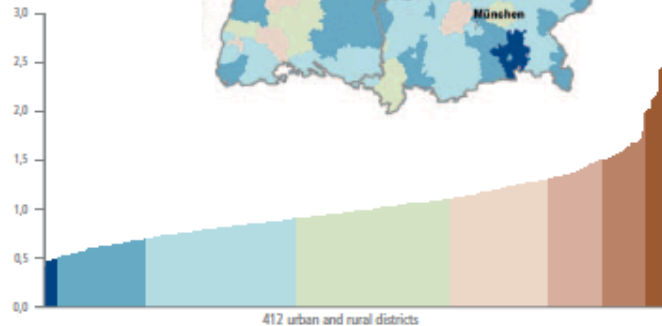


4.10 Implantation of a defibrillator

District-specific surgical index (actual number of surgical interventions / expected number of surgical interventions); OPS-Code S-377.5 to S-377.7: Implantation of a defibrillator with unicameral, bicameral or biventricular stimulation; indirectly standardized by age groups; years 2007 to 2009; Germany = 1.



Index value



Avoid a Sudden Heart Attack ?

Maybe You Should Move!

Find Out Where

Get the **RightCare** app today!





CHILDREN OUT OF BREATH is a condition that millions of parents manage everyday.

But wondering if your doctor will provide the right care should not depend on where you live, should it?

Maybe it's worth moving to a different region of your country.

Check it out today!



News

2014

2013

2012

2011

2010

Events

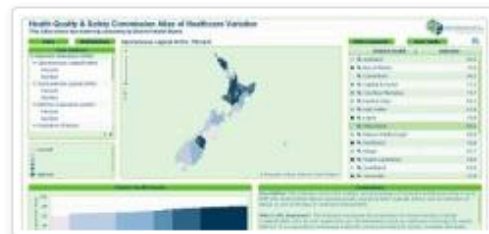
Media Releases

Commission launches New Zealand Atlas of Healthcare Variation



Posted 29th Jun 2012 in [Health Quality Evaluation](#)

The New Zealand Atlas of Healthcare Variation is a new tool from the Health Quality & Safety Commission for clinicians and users and providers of health services. It shows variation between the health care received by people in different geographical regions. The purpose of the Atlas is to



Recently in Health Quality Evaluation

[Hospital patients urged to give feedback](#)

[Hospital patients asked for feedback](#)

[Patient experience](#)

Health Quality & Safety Commission Atlas of Healthcare Variation

This Atlas shows key indicators of DIABETES MANAGEMENT by district health board

Data

Method

Data explorer

- ▶ 1. Diabetes prevalence
- ▶ 2. Aged 25 years and over, regularly receiving metformin
- ▶ 3. Regularly receiving insulin
- ▶ 4. Aged 25 and over regularly receiving insulin or metformin
- ▶ 5. Aged 25 years and over regularly receiving ACEI or ARB
- ▶ 6. Admissions for diabetic ketoacidosis

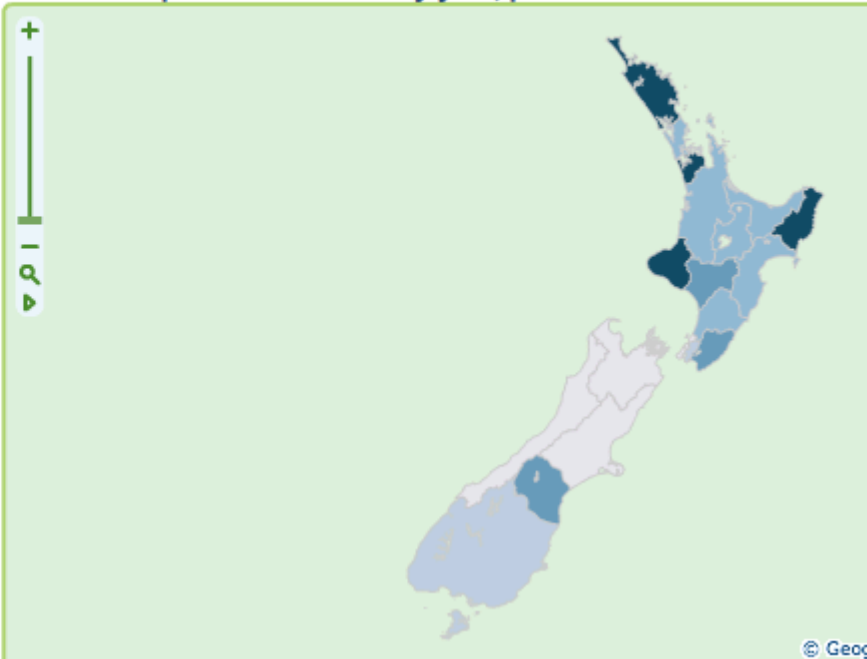
- +

Standard Deviation

Lowest



1. Diabetes prevalence: Total by year, percent : 2013



Asthma?

Maybe You Should Move!

Find Out Where

Get the **RightCare** app today!





WE GO TO DOCTORS because we believe they will help us – right?

But depending on where you live, the chances of getting a harmful prescription can vary greatly.

Seniors in some regions of the US have a much greater risk of getting a Rx that they should never take.

Maybe it's time to move?

Check it out today!

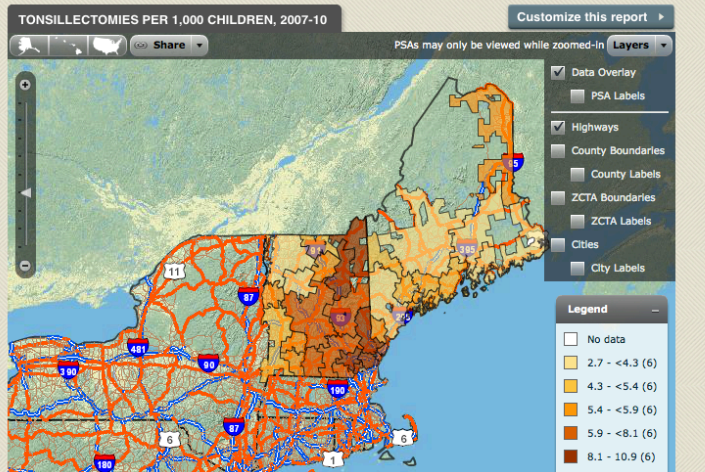




- [Home](#)
- [DATA BY REGION](#)
- [DATA BY HOSPITAL](#)
- [DATA BY TOPIC](#)
- [TOOLS](#)
- [KEY ISSUES](#)
- [PUBLICATIONS](#)
- [PRESS ROOM](#)

Understanding of the Efficiency and Effectiveness of the Health Care System

For more than 20 years, the Dartmouth Atlas Project has documented glaring variations in how medical resources are distributed and used in the United States. The project uses Medicare data to provide information and analysis about national, regional, and local markets, as well as hospitals and their affiliated physicians. This research has helped policymakers, the media, health care analysts and others improve their understanding of our health care system and forms the foundation for many of the ongoing efforts to improve health and health systems across America. [LEARN MORE](#)



Tonsillectomies varied by a factor of more than three, from fewer than 3 to more than 10 per 1,000 children, across Northern New England pediatric surgical areas during 2007-10. Read more in *The Dartmouth Atlas of Children's Health Care in Northern New England*.

[READ MORE](#)

VIEW OTHER DATA BY:

- [REGION](#)
- [HOSPITAL](#)
- [TOPIC](#)

VIEW DATA BY ZIP CODE:

85331 Region Hospital [GO](#)

SPOTLIGHT

THE DARTMOUTH ATLAS OF CHILDREN'S HEALTH CARE IN NORTHERN NEW ENGLAND

The Dartmouth Atlas has produced the first report showing the patterns of care received by nearly the entire population of infants and children in Northern New England for ambulatory physician services, hospitalization, common surgery, imaging, and outpatient prescription fills. The findings from this report show marked variation in care across the region; while there are many examples of excellent care, the findings raise troubling questions about whether the medical practice patterns reflect the care that infants and children need and that their families want. Read the [report](#), [press release](#), [download data tables](#), or purchase a [hardcover](#) or [paperback](#) copy.

[READ MORE](#)

THE DARTMOUTH ATLAS OF MEDICARE PRESCRIPTION DRUG USE

In its first look at prescription drug use, the Dartmouth Atlas Project shows that the use of both effective and risky drug therapies by Medicare patients varies widely across U.S. regions, offering further evidence that location is a key determinant in the quality and cost of the medical care that patients receive. Read the [report](#), [press release](#), [download data tables](#), or [purchase a copy](#).

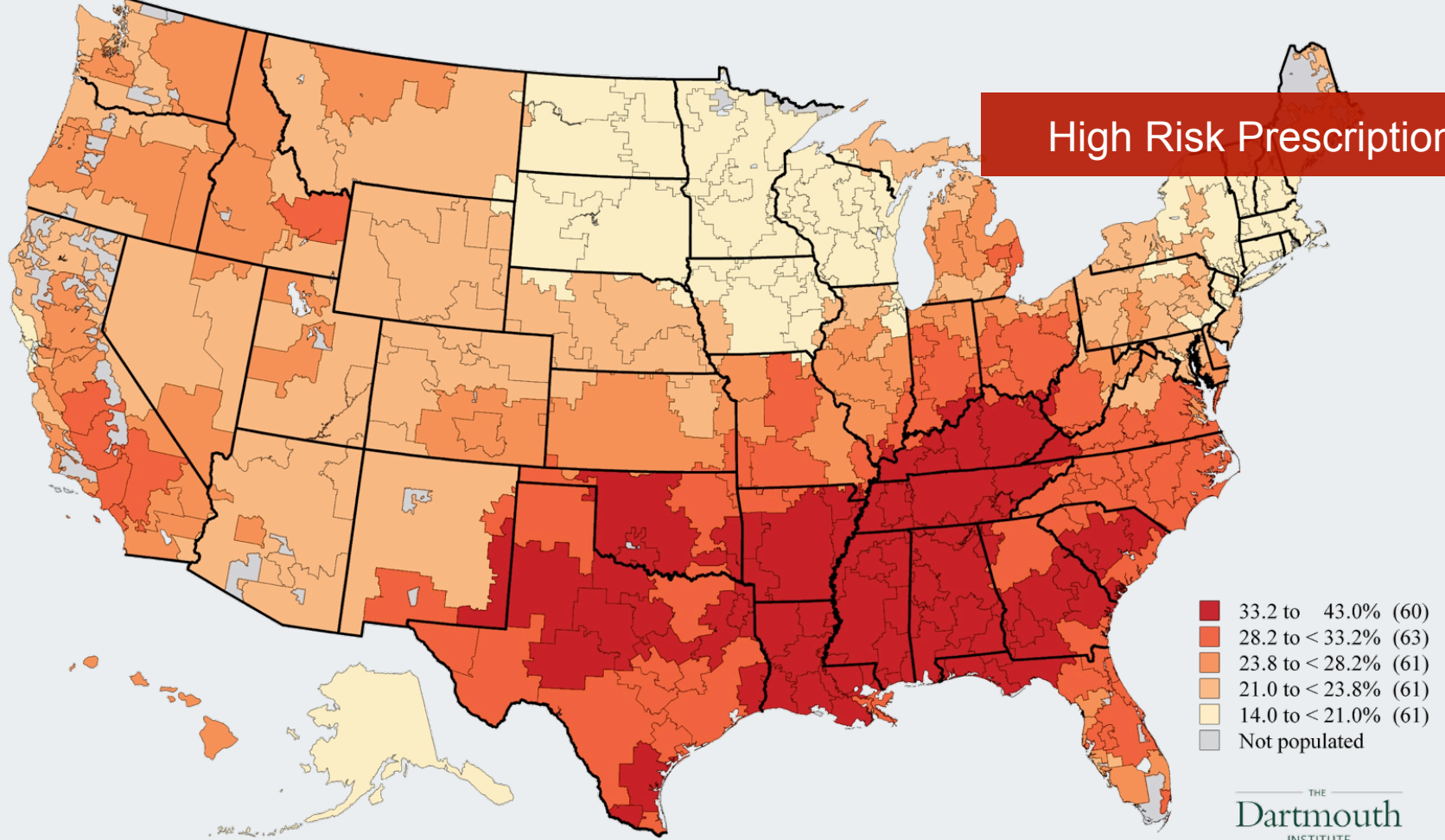
[READ MORE](#)

STAY INFORMED

Enter email address to learn about site updates and news.

[Join Notification List](#)

High Risk Prescription



Prescribed a banned drug?

Maybe You Should Move!

Find Out Where

Get the **RightCare** app today!





TOXIC CHEMICALS DUMPED– in over 56,000 places in more than half of all US towns.

Your doctor should not have to guess if you have lived close to these chemicals – and neither should you.

Let's drive unnecessary guess work out of the doctor's office!

Check it out today!



http://iaspub.epa.gov/triexplorer/tri_release.chemical

Top 100 Carcinogens

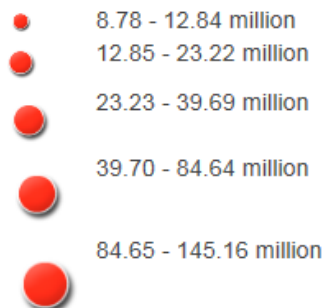
Explore the top 100 carcinogen releasing facilities in the US.

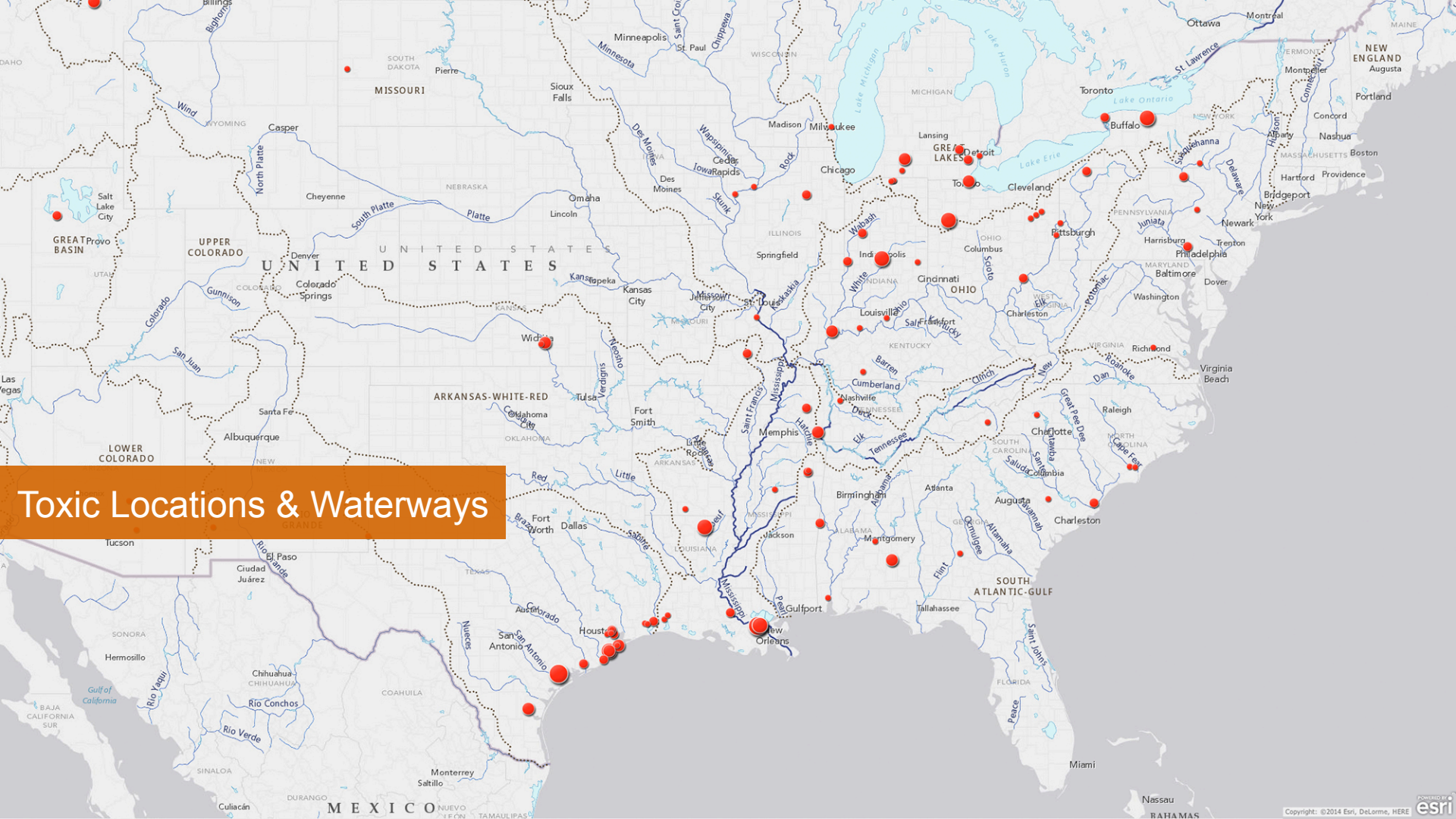
All data courtesy of the [U.S. EPA's Toxic Release Inventory](#), 1987-2011.

The data are totals of annual summaries, and do not include all facilities, chemicals, or specific histories or frequencies of releases.

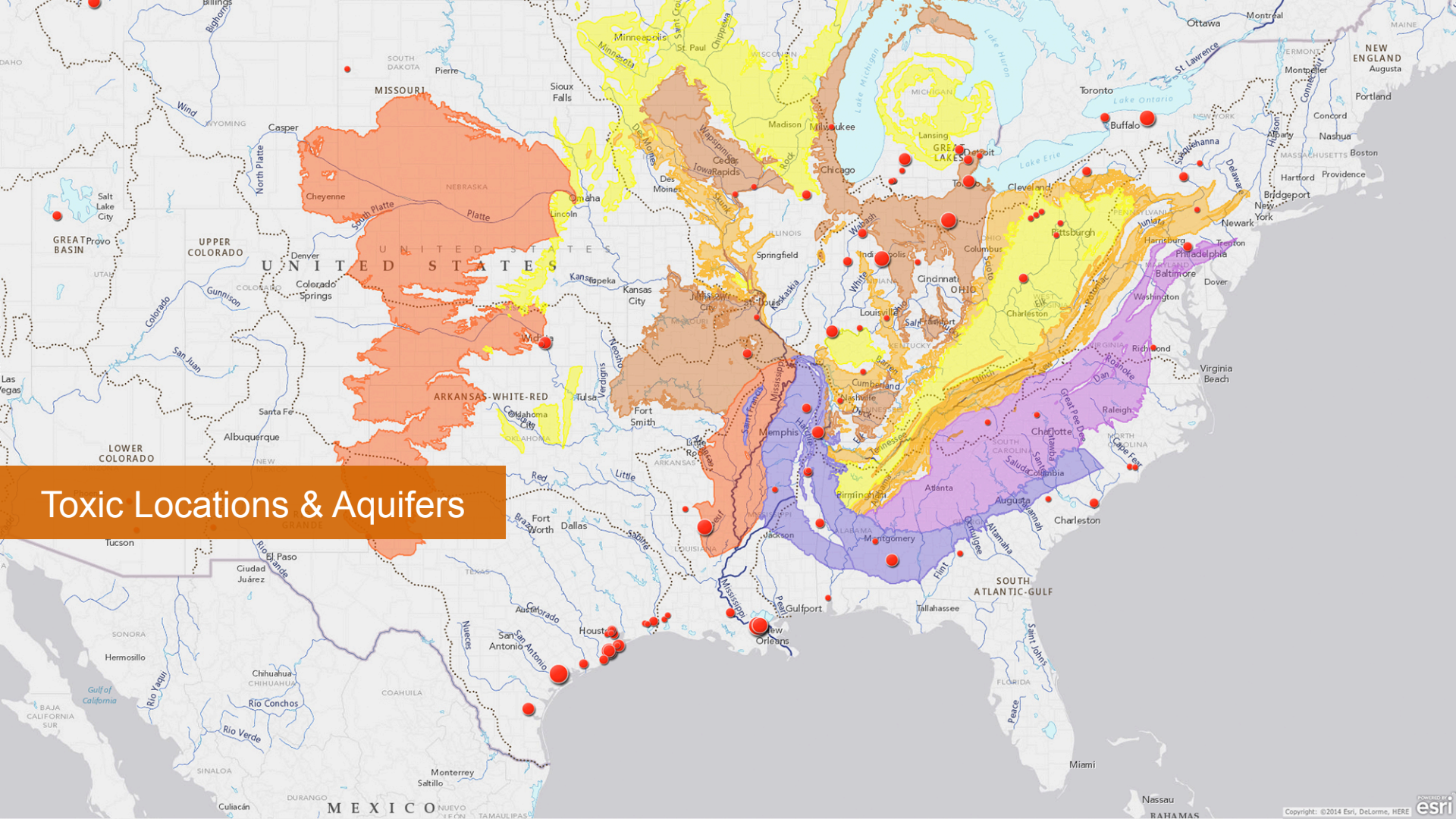
LEGEND

Facilities by Total Carcinogens Released (Pounds)





Toxic Locations & Waterways



Toxic Locations & Aquifers

Toxic Chemicals near you?

Maybe You Should Move!

Find Out Where

Get the **RightCare** app today!





THERE IS NOTHING WORSE than going on holiday and coming home sick!

That little hide-a-way in central France seemed so perfect - except that you brought home a new little “friend” – a deer tick.

So why don't more of us see and use public health maps to help keep us out of danger?

Print a deer tick health map and show it to your doctor. Bet they will like it too!

Ixodes ricinus

Current known distribution: September 2012

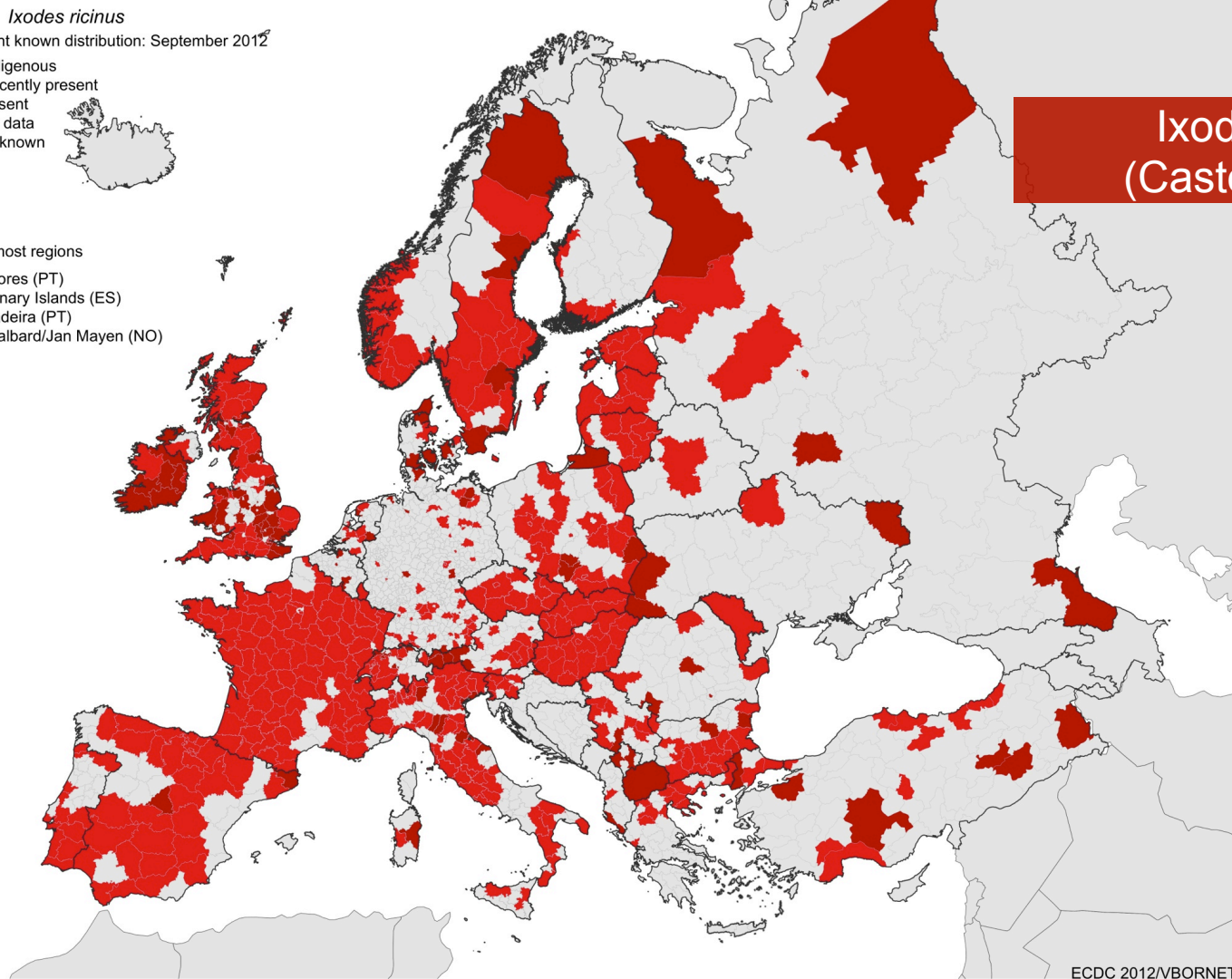
- Indigenous
- Recently present
- Absent
- No data
- Unknown



Outermost regions

- Azores (PT)
- Canary Islands (ES)
- Madeira (PT)
- Svalbard/Jan Mayen (NO)

Ixodes Ricinus (Castor Bean tick)



Bugs to Avoid?

Maybe You Should Move!

Find Out Where

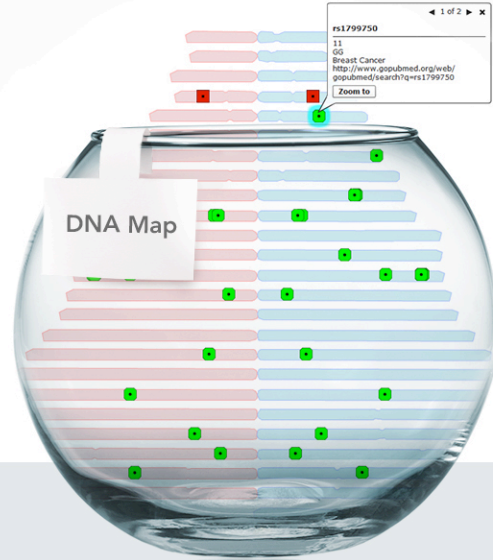
Get the **RightCare** app today!



3 Ways to Get Attention

Make it Personal

Genetics



Environment



Lifestyle

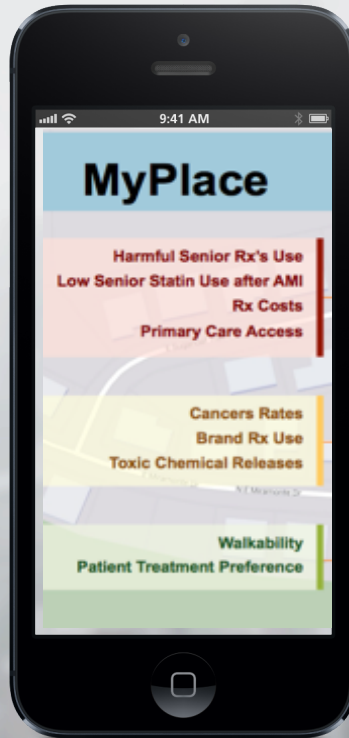




My Place History

Free iOS & PC App

Available on the
App Store



RightCareXX.org

MyPlace

Harmful Senior Rx's Use
Low Senior Statin Use after AMI
Rx Costs
Primary Care Access

Cancers Rates
Brand Rx Use
Toxic Chemical Releases

Walkability
Patient Treatment Preference



% Above Average Risk

- 10 Heart Attack
- 7 Macular Degeneration
- 6 Atrial Fibrillation (Afib)
- 2 Exfoliation Glaucoma
- 1 Chronic Kidney Disease
- 1 Colon Rectal Disease

Other DNA Risk

Canavan, Warfarin Sensitivity,
Plavix Low Response

An aerial, black and white photograph of a city, likely Davenport, Iowa. The city is densely packed with buildings, and a river winds through the center. In the background, a range of mountains is visible under a clear sky. The text 'Thank You' is overlaid in large white letters in the upper right quadrant.

Thank You

bdavenhall@esri.com

davenhall@aol.com