

Variations in Quality Indicators across Ontario Physician Networks

Therese Stukel, Ruth Croxford,
Rick Glazier, Arlene Bierman

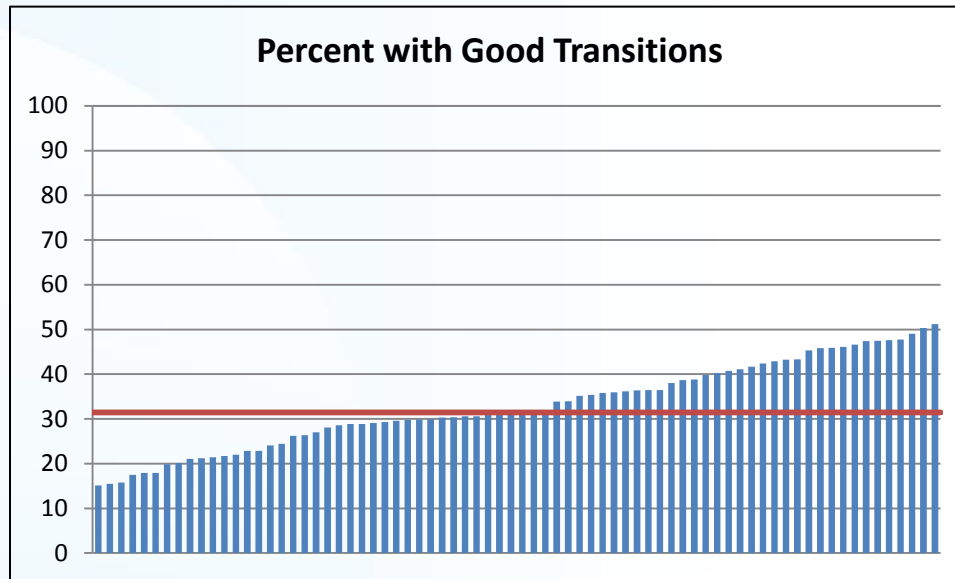


Network health system efficiency: Relationships among Quality Domains

Quality domains were computed as aggregated individual quality indicators

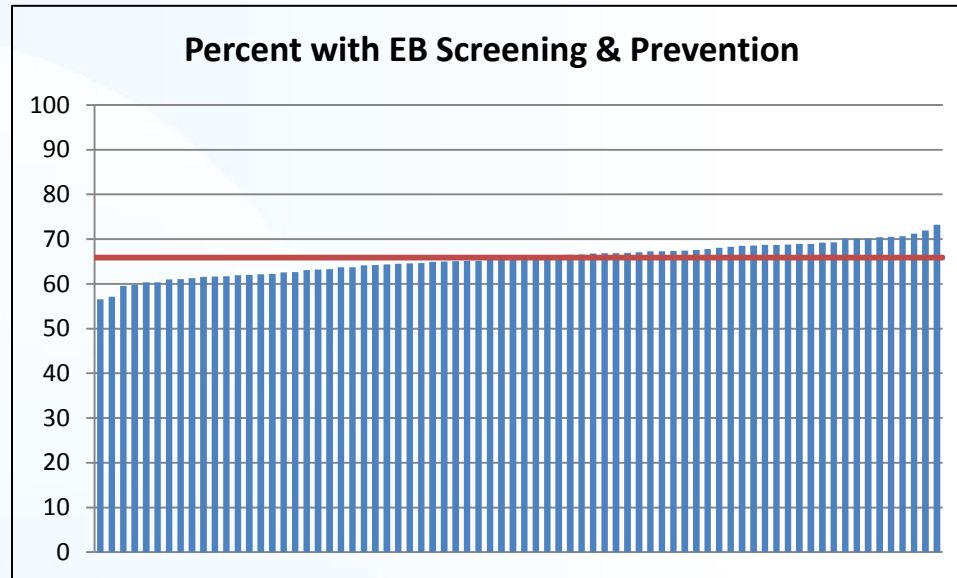
- Good transitions
- Evidence-based (EB) screening & prevention
- Evidence-based (EB) drugs
- Adverse outcomes
- Poor end-of-life (EOL) care
- Overuse

Good Transitions



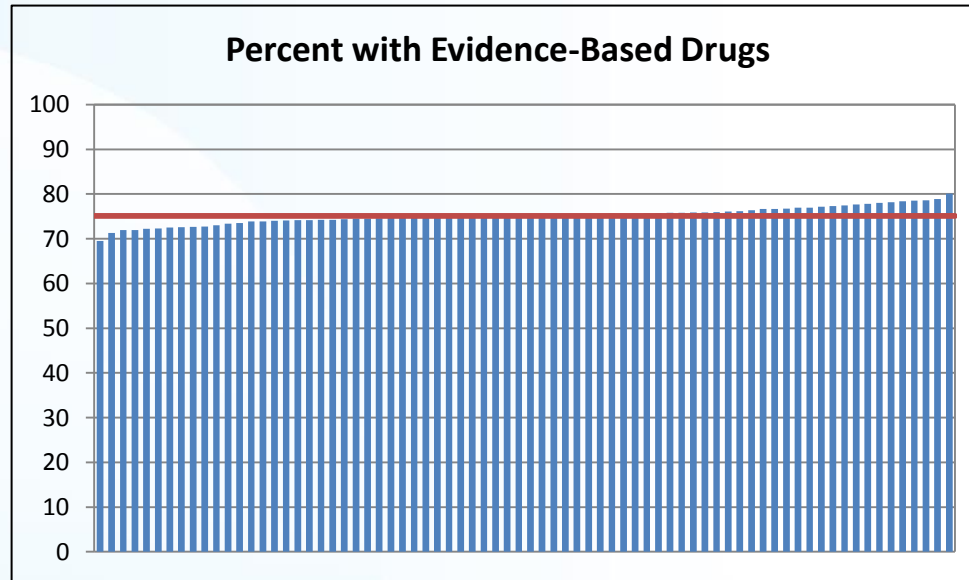
	Percent with Good Transitions				
	10 th	25 th	50 th	75 th	90 th
	20.43	26.56	31.45	40.63	46.45

Evidence-Based Screening & Prevention



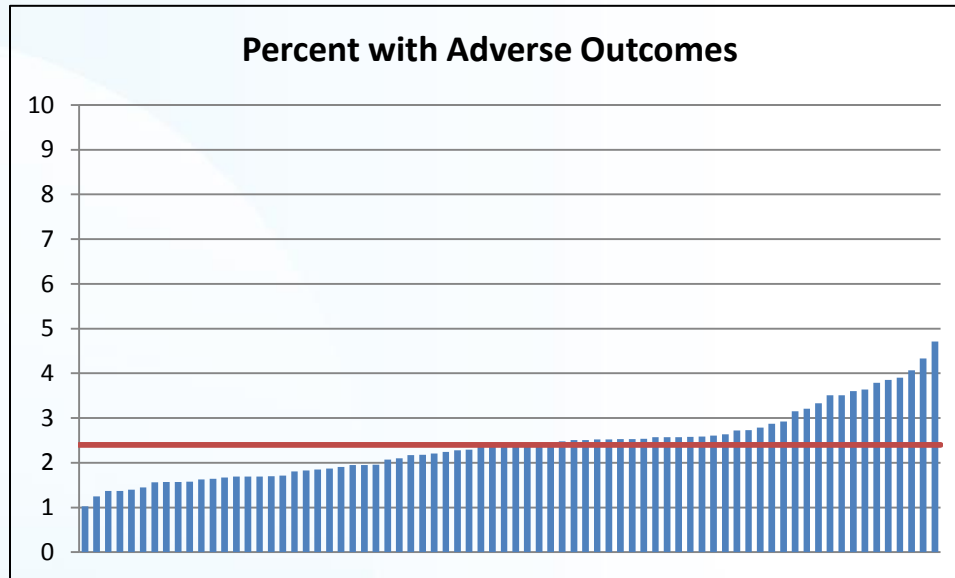
	Percent with EB Screening & Prevention				
	10 th	25 th	50 th	75 th	90 th
	61.13	63.12	65.88	68.24	70.15

Evidence-Based Drugs



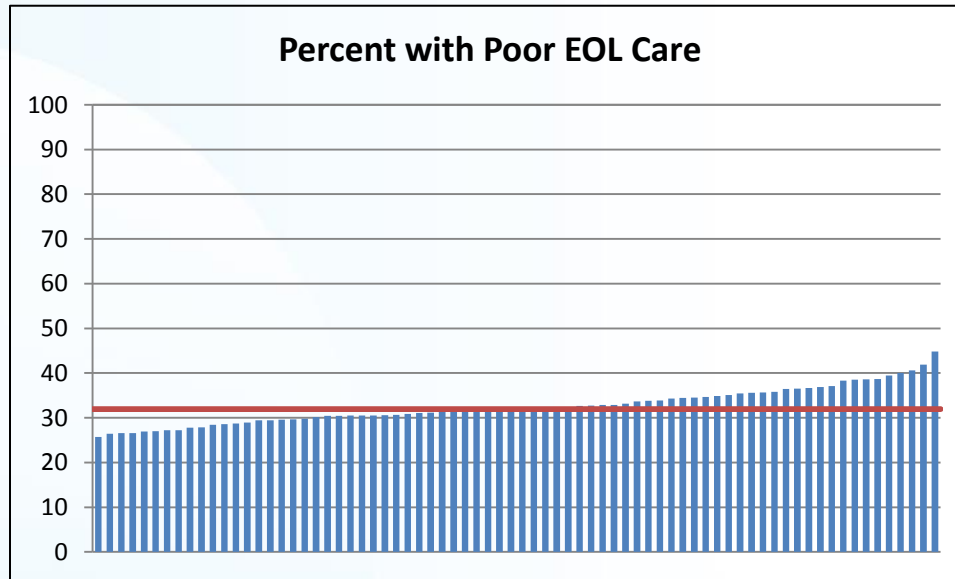
	Percent with EB Drugs				
	10 th	25 th	50 th	75 th	90 th
	72.62	74.193	75.115	76.133	77.765

Adverse Outcomes



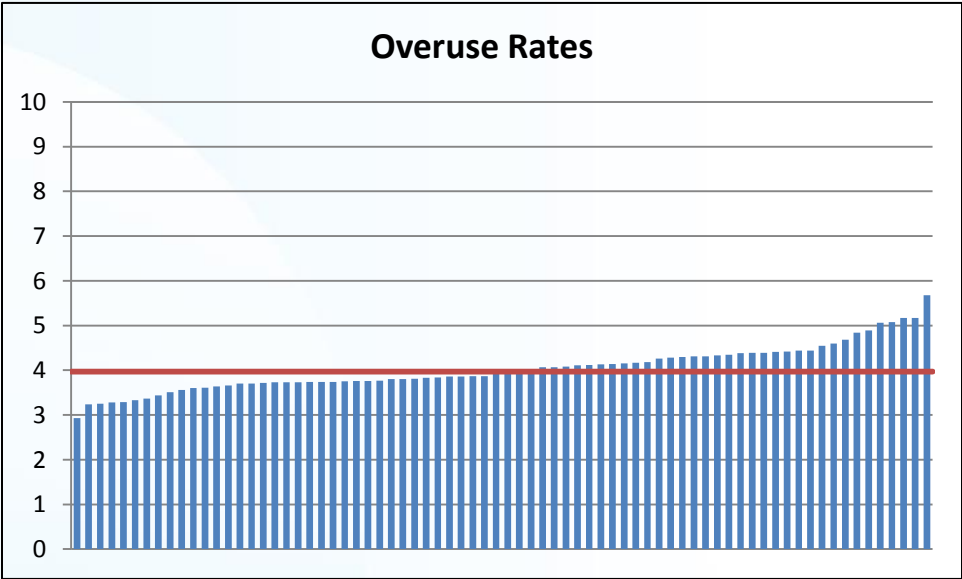
	Percent with Adverse Outcomes				
	10 th	25 th	50 th	75 th	90 th
	1.57	1.82	2.40	2.63	3.57

Poor End-of-Life Care



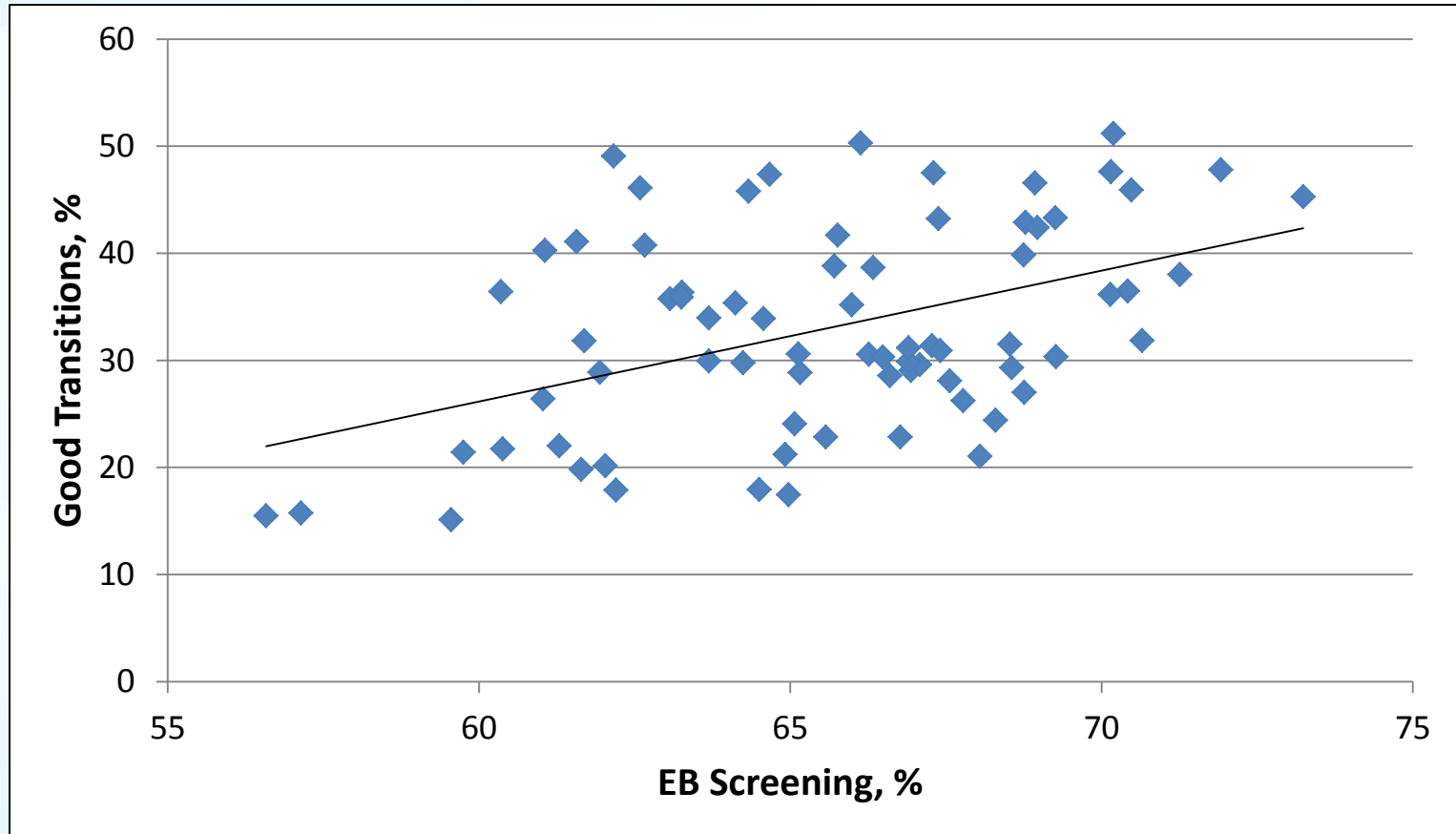
	Percent with Poor EOL Care				
	10 th	25 th	50 th	75 th	90 th
	27.41	29.89	31.95	35.06	38.48

Overuse Rates



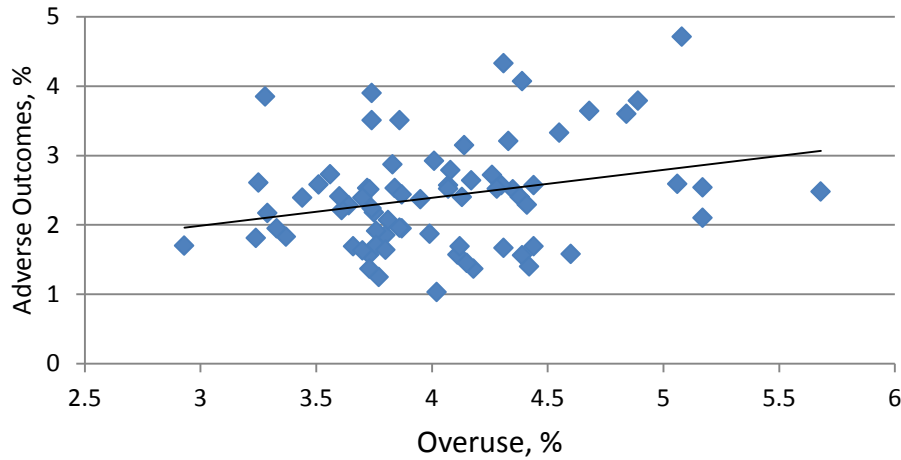
	Overuse Rates				
	10 th	25 th	50 th	75 th	90 th
	3.46	3.73	3.97	4.33	4.66

Good Transitions vs. EB Screening

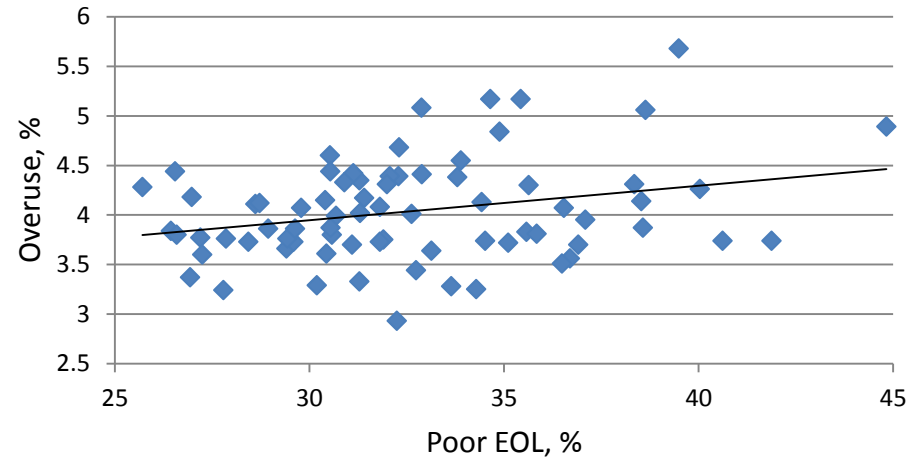


Adverse Outcomes vs. Poor EOL Care vs. Overuse

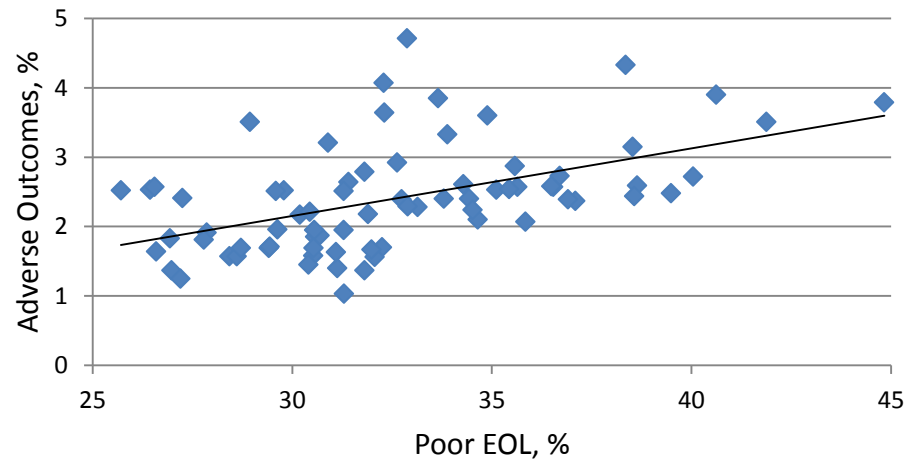
Adverse Outcomes vs. Overuse



Overuse vs. Poor EOL

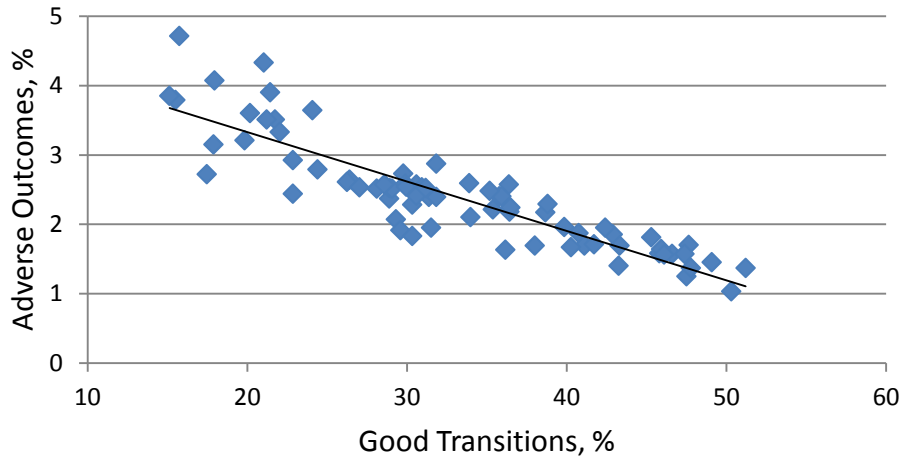


Adverse Outcomes vs. Poor EOL

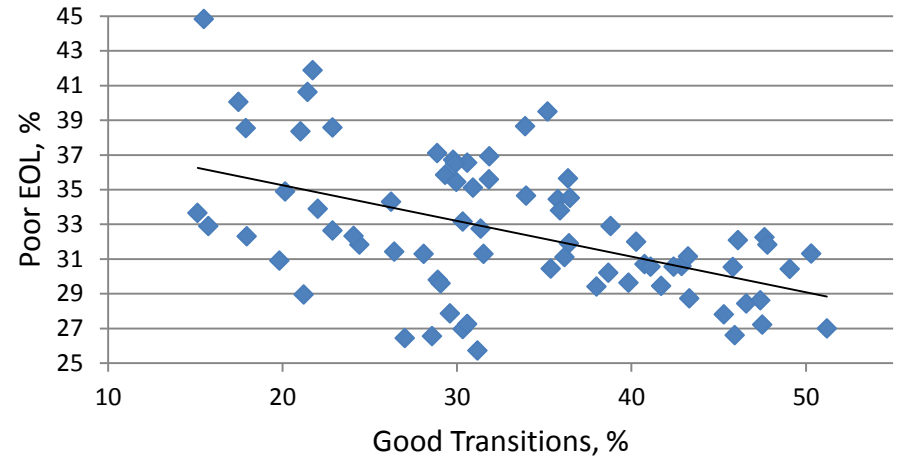


Poor Care vs. Good Transitions

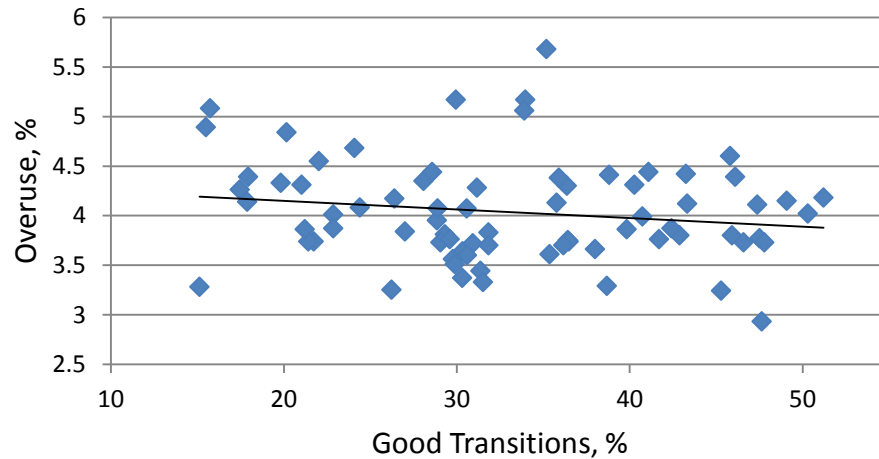
Adverse Outcomes vs. Good Transitions



Poor EOL vs. Good Transitions

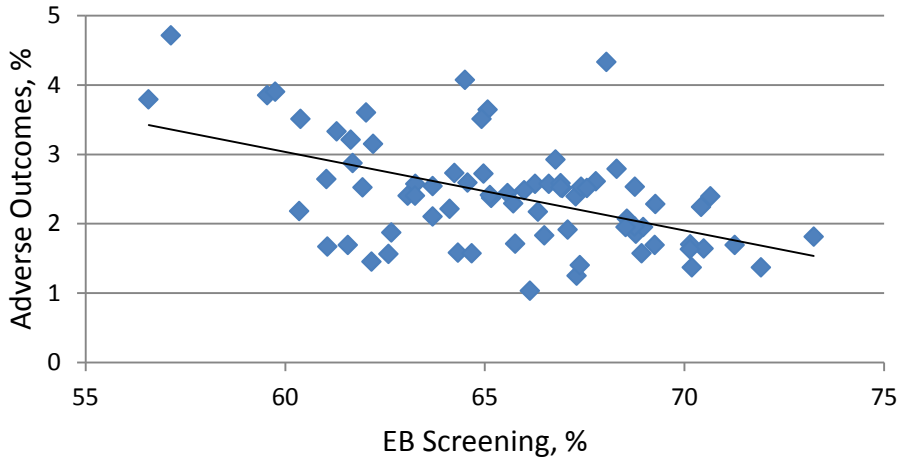


Overuse vs. Good Transitions

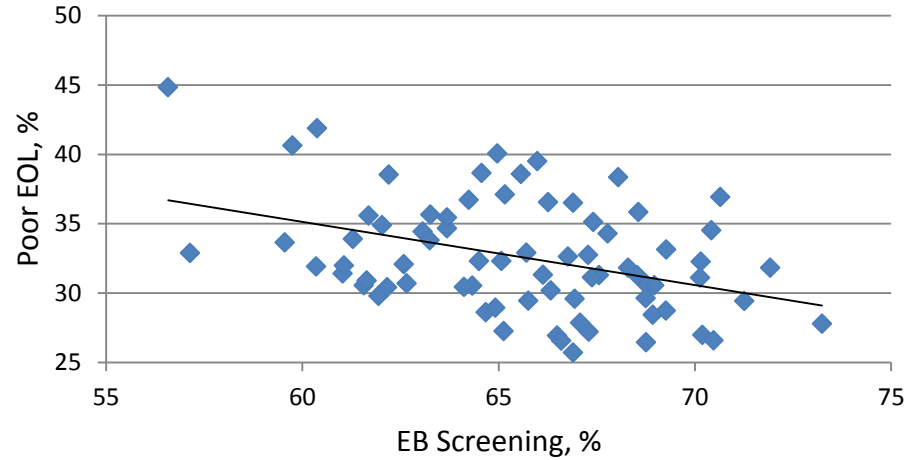


Poor Care vs. EB Screening

Adverse Outcomes vs. EB Screening



Poor EOL vs. EB Screening



Overuse vs. EB Screening

