

# The geography of end of life care in Switzerland

Radoslaw Panczak

Institute of Social and Preventive Medicine  
University of Bern

**Wennberg International Collaborative, London 2014**

- > There is a wide regional variation in the costs and structure of health care use for seriously ill and dying patients.
- > Existing studies showed that local capacity is a more powerful predictor of utilization than patient characteristics.
- > Little is known about patient- and regional level determinants of end of life care (EOLC) variation in Switzerland.

*To describe regional and temporal variation of intensity of EOLC in the last 12 months of life and to identify patient, regional and institutional characteristics associated with variation.*

## Methods: Health insurance claims data

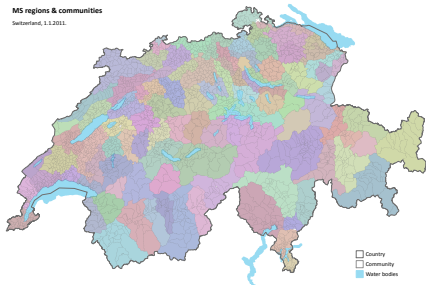
- > Six major health insurance providers
- > All deaths among insured 2008-10
- > All claims 12 months prior to death
- > Swiss adult (19+) residents with complete information on age, date of death & place of residence
- > Aggregated indicators focusing on costs



# Methods: Geographical resolutions

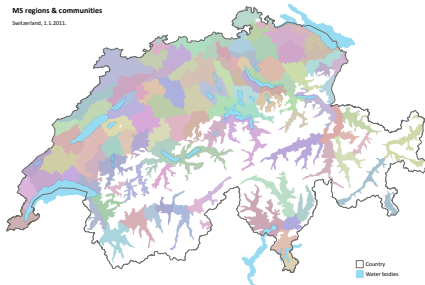
MS regions & communities

Switzerland, 1.1.2011.

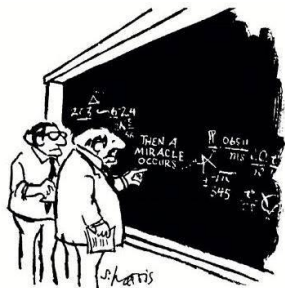


MS regions & communities

Switzerland, 1.1.2011.



- > Multilevel regression (MS region)
- > Overall EOLC costs 0-1 months before death as outcome
- > Three levels of covariates:
  - Individual (age & sex)
  - Regional (Swiss-SEP, urbanicity & language region)
  - Institutional (no. of GPs, no. of specialists & no. of hospital beds)
- > Comparison of variance explained by adjusted and unadjusted models



"I THINK YOU SHOULD BE MORE EXPLICIT  
HERE IN STEP TWO."

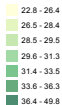
## Results: Study population(s)

3,889,312	Health care bills
354,093	Period specific indicators
118,031	Deceased individuals
106	MS regions
63.9%	of all deaths

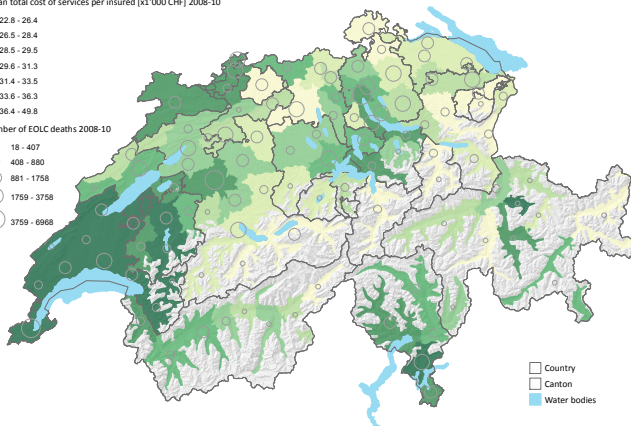
# Results: Regional variation in EOLC costs

## Total cost of services used in the last 12 months of life

Mean total cost of services per insured [x1'000 CHF] 2008-10



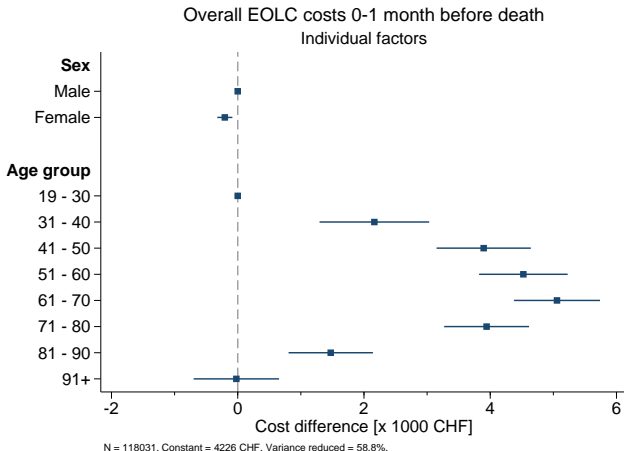
Number of EOLC deaths 2008-10



□ Country  
□ Canton  
■ Water bodies

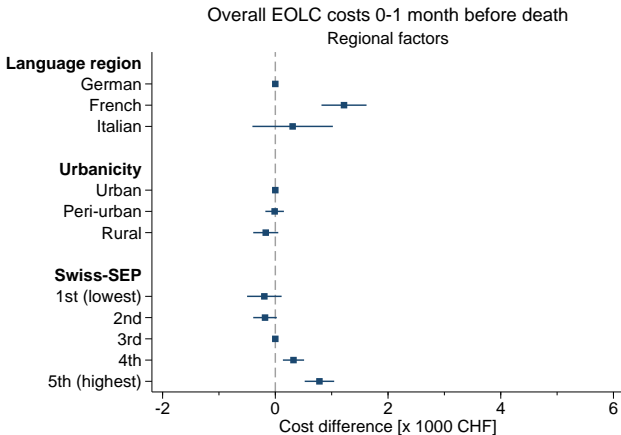


# Results: Determinants of overall EOLC costs I



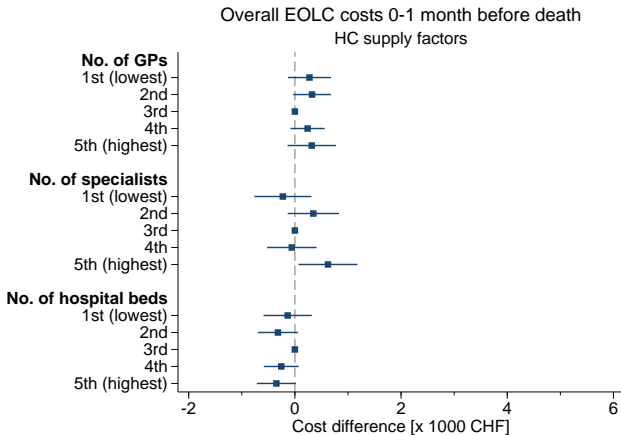
# Results:

## Determinants of overall EOLC costs II



N = 118031. Constant = 4226 CHF. Variance reduced = 58.8%.

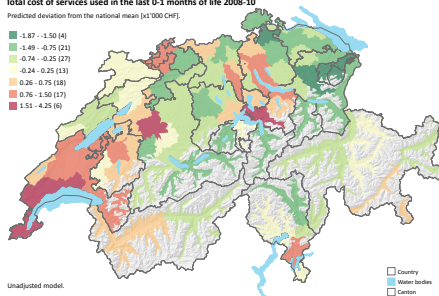
# Results: Determinants of overall EOLC costs III



# Results: Regional variation

**Total cost of services used in the last 0-1 months of life 2008-10**

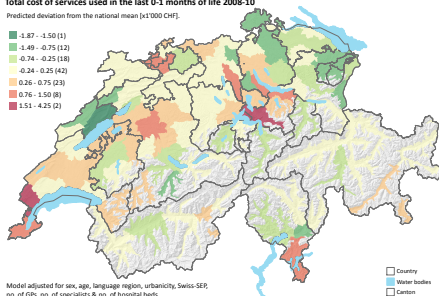
Predicted deviation from the national mean [x1'000 CHF].



Unadjusted model.

**Total cost of services used in the last 0-1 months of life 2008-10**

Predicted deviation from the national mean [x1'000 CHF].



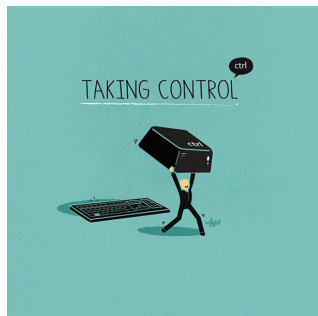
Model adjusted for sex, age, language region, urbanicity, Swiss-SEP, no. of GPs, no. of specialists & no. of hospital beds.

## Summary: Main findings

- > Age shows strongest association with overall and specific EOLC costs
- > Moderate (area-based) socioeconomic gradient
- > Little effect of supply measures
- > Large regional variation

## Summary: Limitations & next steps

- > No information on cause of death.
- > No information on individuals from other insurers and individuals that did not die during study period.
- > Exploration of alternative geographies of care supply.
- > Use of TARMED points as 'cost' of ambulatory care.



Thank you for your attention!

# Results: Study population

Characteristic	Group	Male		Female		Total	
		No.	Col %	No.	Col %	No.	Col %
Age group	19 - 30	623	1.1%	279	0.4%	902	0.8%
	31 - 40	782	1.4%	455	0.7%	1,237	1.0%
	41 - 50	2,072	3.7%	1,189	1.9%	3,261	2.8%
	51 - 60	4,462	8.0%	2,676	4.3%	7,138	6.0%
	61 - 70	8,900	16.0%	5,256	8.4%	14,156	12.0%
	71 - 80	14,372	25.9%	11,301	18.1%	25,673	21.8%
	81 - 90	18,692	33.7%	26,143	41.8%	44,835	38.0%
	91+	5,630	10.1%	15,199	24.3%	20,829	17.6%
Urbanicity	Urban	16,645	30.0%	21,107	33.8%	37,752	32.0%
	Peri-urban	23,732	42.7%	25,927	41.5%	49,659	42.1%
	Rural	15,156	27.3%	15,464	24.7%	30,620	25.9%
Language region	German	38,933	70.1%	44,013	70.4%	82,946	70.3%
	French	13,750	24.8%	15,108	24.2%	28,858	24.4%
	Italian	2,850	5.1%	3,377	5.4%	6,227	5.3%
Swiss-SEP quintile	1st (lowest)	4,678	8.4%	4,597	7.4%	9,275	7.9%
	2nd	11,281	20.3%	12,247	19.6%	23,528	19.9%
	3rd	15,202	27.4%	17,054	27.3%	32,256	27.3%
	4th	18,036	32.5%	21,689	34.7%	39,725	33.7%
	5th (highest)	6,336	11.4%	6,911	11.1%	13,247	11.2%
<b>Total</b>		55,533	100.0%	62,498	100.0%	118,031	100.0%

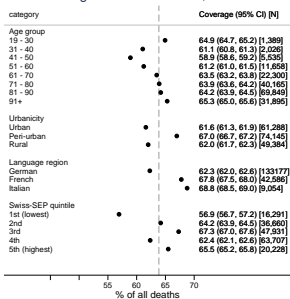


# Appendix: Study population - claims

Characteristic	Group	Male		Female		Total	
		No.	Col %	No.	Col %	No.	Col %
<b>Service provider</b>	Primary care	282,590	15.7%	346,694	16.7%	629,284	16.3%
	Specialist	145,630	8.1%	137,260	6.6%	282,890	7.3%
	Community nurse	105,774	5.9%	127,148	6.1%	232,922	6.0%
	Other therapists	25,136	1.4%	31,207	1.5%	56,343	1.5%
	Pharmacy	555,132	30.9%	649,592	31.3%	1,204,724	31.1%
	Diagnostic laboratory	85,230	4.7%	92,417	4.5%	177,647	4.6%
	Acute hospital	396,175	22.1%	329,792	15.9%	725,967	18.8%
	Non-acute hospital	142,619	7.9%	308,555	14.9%	451,174	11.7%
	Other	58,251	3.2%	51,521	2.5%	109,772	2.8%
<b>Total</b>		<b>1,806,194</b>	<b>100.0%</b>	<b>2,083,118</b>	<b>100.0%</b>	<b>3,889,312</b>	<b>100.0%</b>

# Appendix: Representativeness

### Coverage of the EOLC data, 2008-10

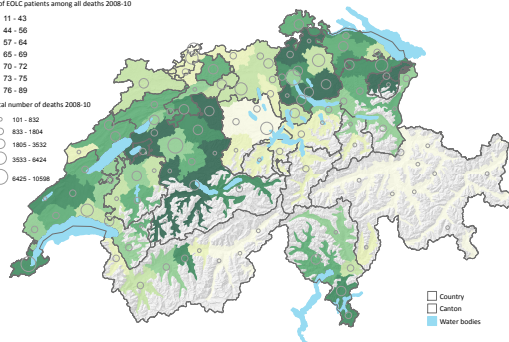


### The coverage of EOLC dataset

% of EOLC patients among all deaths 2008-10



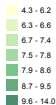
Total number of deaths 2008-10



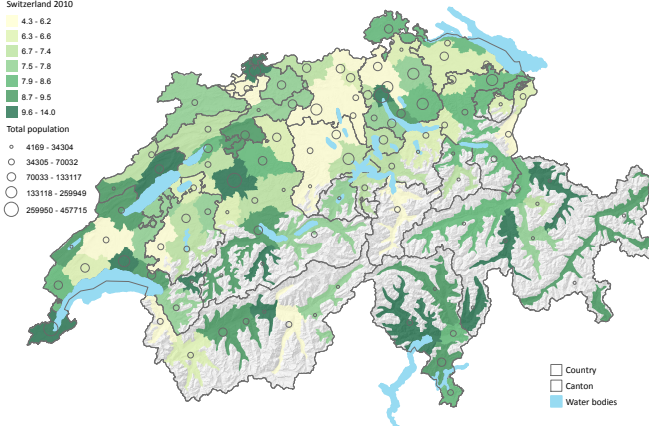
# Methods: Health care supply indicators I

## Number of GPs per 10'000 inhabitants

Switzerland 2010



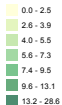
Total population



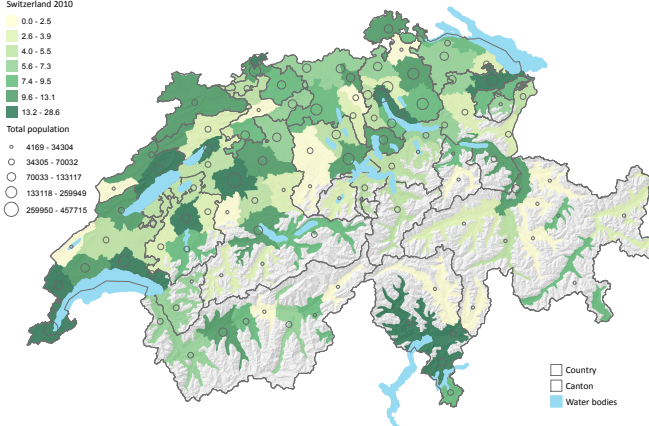
# Methods: Health care supply indicators II

Number of specialists per 10'000 inhabitants

Switzerland 2010



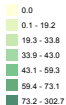
Total population



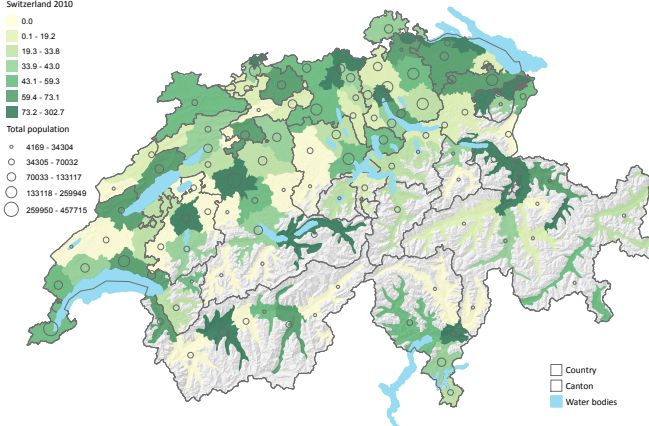
# Methods: Health care supply indicators III

## Number of hospital beds per 10'000 inhabitants

Switzerland 2010



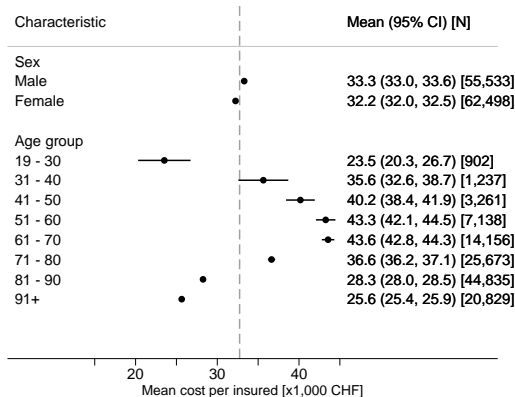
Total population



# Appendix: Variation in EOLC costs I

## Total EOLC cost during last 12 months of life

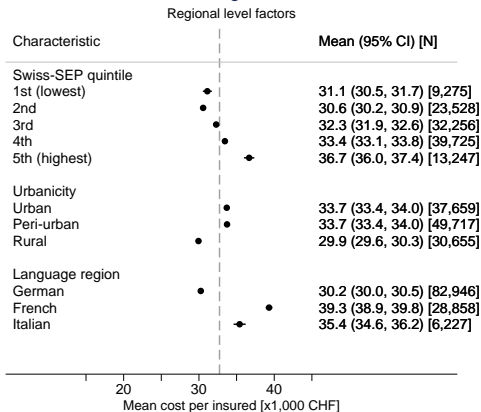
Individual level factors



Dashed line - overall mean of 32.7k CHF

# Appendix: Variation in EOLC costs II

## Total EOLC cost during last 12 months of life

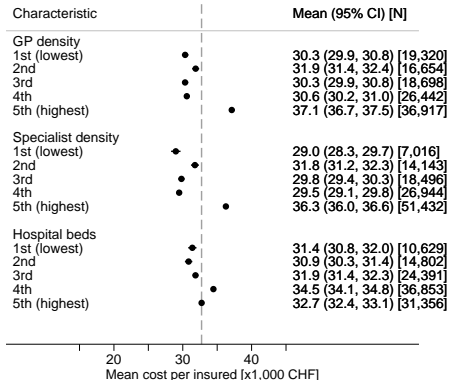


Dashed line - overall mean of 32.7k CHF

# Appendix: Variation in EOLC costs III

## Total EOLC cost during last 12 months of life

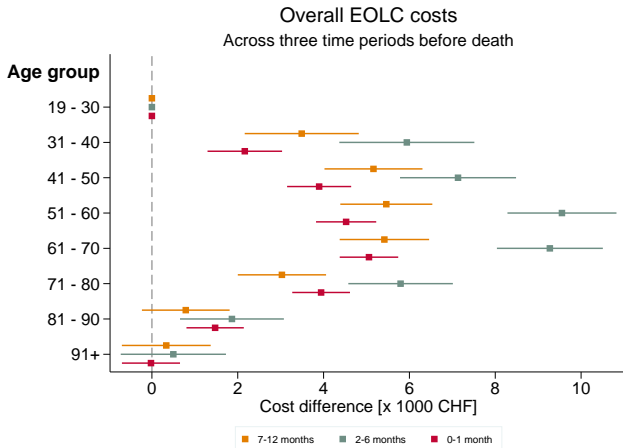
Care supply factors



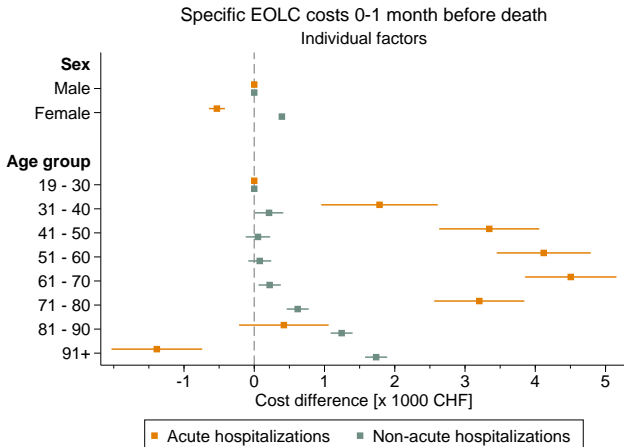
Dashed line - overall mean of 32.7k CHF



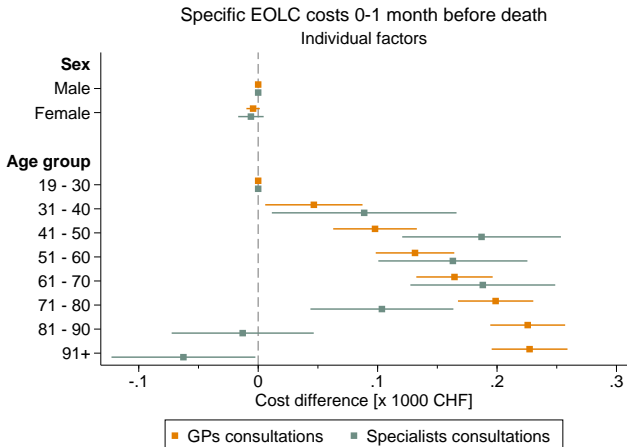
# Appendix: Determinants of overall EOLC costs across time



# Appendix: Determinants of specific EOLC costs I



## Appendix: Determinants of specific EOLC costs II



# Appendix: Determinants of specific EOLC costs III

